



## **National Training Week (NTW) Halloween Regatta & Crosbie Cup 2023**

**4 November 2023**

**Royal Cork Yacht Club, Crosshaven, Co. Cork**

**SUPPLEMENTARY SAILING INSTRUCTIONS (SSIs)**

### **1 RULES**

1.1 These Supplementary Sailing Instructions (SSIs) are to be read in conjunction with the current IODAI Major Event Sailing Instructions (MESIs). If there is a conflict between the Notice of Race or MESI and these SSIs, these SSIs shall prevail.

### **2 COMMUNICATIONS WITH COMPETITORS**

2.1 Notices to competitors shall be posted on the IODAI WhatsApp groups.

2.2 Competitors briefing for Main Fleet sailors will be held at 0930 on Saturday morning on the front Lawn outside the Club House of RCYC.

2.3 A safety briefing for rescue boats/ support boat crews will be held at 0900 on the front Lawn outside the Club House of RCYC.

2.4 On the water, the Main Fleet race committee intends to monitor and communicate on VHF radio channel <71> with channel <79> being used as a backup safety channel. Any changes to these channels will be updated in the competitors briefing or will be broadcast on channel <71> before the first warning signal.

### 3 SIGNALS MADE ASHORE

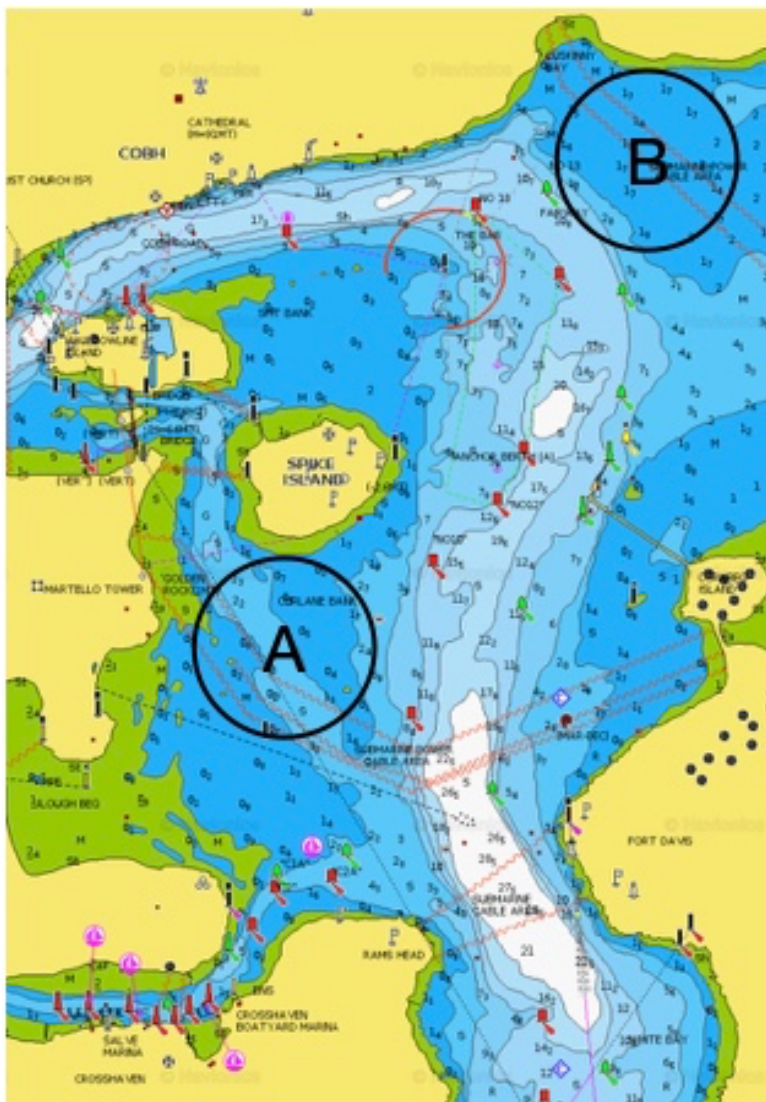
3.1 Signals made ashore shall be displayed at the Main Mast in front of the clubhouse.

### 4 SCHEDULE

Sat 04 November	Safety Briefing	0900 to 0930
(HW Cobh 09:25)	Main Fleet Briefing, launch ASAP after	0930 to 1000
	Main Fleet First Warning Signal	1055
	Prizegiving	ASAP after Racing

### 5 RACING AREA

5.1 The racing area will be on the Curlane Bank (A) or Cuskinny (B). Race areas will be clarified at the competitors' briefing.



## 6 MARKS AND COMMITTEE BOATS

- 6.1 All racing marks are spherical orange/ pink buoys
- 6.2 The pin end starting mark, rib with red and white pole
- 6.3 The pin end of the finishing line is a spherical green buoy
- 6.4 Start Boat – 8.5m RCYC club motor cruiser “Gem” (blue catamaran motor boat) displaying an orange flag
- 6.5 Finishing Boat – 9m motor cruiser “Harmony”
- 6.6 Any update to the marks or committee boats will be updated at the competitors briefing.

## 7 THE START

- 7.1 The starting line is between a red and white staff on the committee boat at the starboard end and a rib displaying a red and white staff or white ball-type buoy on the port-end starting boat.

## 8 THE FINISH

- 8.1 The finishing line is between a staff displaying a blue flag on the finishing boat at the starboard end and the course side of the port end finishing mark.

## 9 HEARING REQUESTS

- 9.1 Protests / requests for redress shall be lodged via the Events page on [www.racingrulesofsailing.org](http://www.racingrulesofsailing.org) –

<https://www.racingrulesofsailing.org/documents/7436/event>

The protest time limit shall be 30 minutes after all boats have tallied in or after the Race Committee has accounted for any boats not tallied already.

## 10 THE COURSE

- 10.1 Senior and Junior fleets will race together and sail the Junior fleet course

## 11 OFFICIAL VESSELS

- 11.1 Jury boats shall display a yellow flag.

## 12 SAFETY

12.1 The tally board shall be located at the top of the RCYC slipway.

## 13 [DP] SUPPORT TEAMS

13.1 All support boat drivers must attend a safety briefing at the clubhouse on the first morning of the event.

13.2 Personal buoyancy must be worn at all times.

13.3 When the engine is running Kill cords MUST be worn by the helmsperson. Failure to comply with SSI 13.4 will result in the support vessel being excluded from the race area.

13.4 Support vessels must be equipped with a working VHF radio and monitor the channel appropriate to the fleet they are supporting.

13.5 From the time of the preparatory signal for each race, Support vessels shall stay below a line approximately 100m to leeward of the starting line and at least 100m outside of the course and its extremities throughout the passage of that race.

13.6 Towing of competitors to and from the race area shall not be permitted unless requested or approved by the race committee. This shall be broadcast via VHF.